

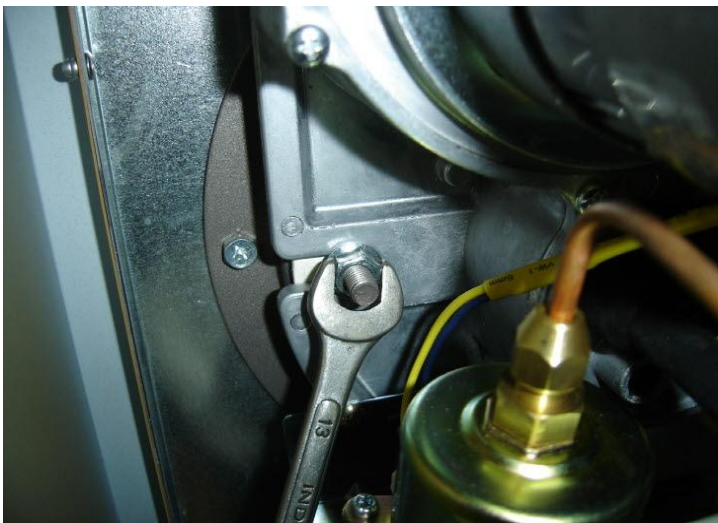
How to replace a burner nozzle



1. Prepare the necessary tools.



2. Disconnect the connector wires connected to the control and burner.



3. Remove the two bolts on the burner connected to the main combustion tube.



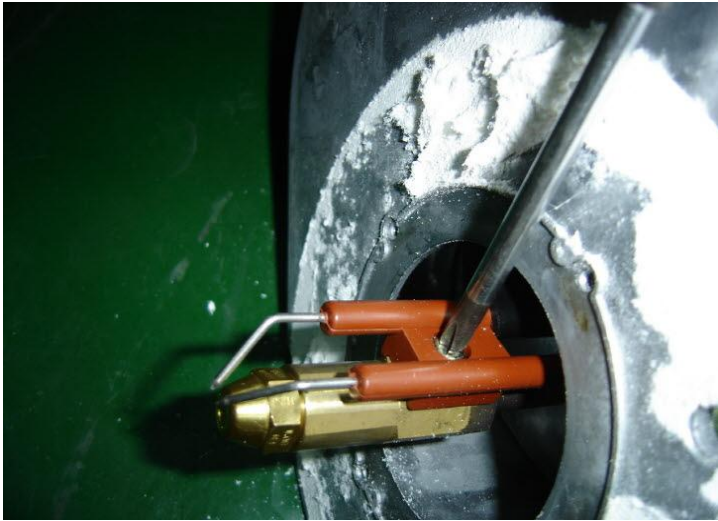
4. Remove the bolts that secure the burner.



5. Remove the gasket as shown in the photo.



6. Remove the fixing screw on the front of the burner.



7. Remove the screws connected to the spark plug.



8. Hold the nozzle and nozzle as shown in the photo and apply strong force momentarily to release them.



9. Unscrew the nozzle, replace it with a new one, and assemble in reverse order.